

ARM Smart Industrial Camera

The purpose of ITE smart camera is to create a compact and practical smart camera and provide an ideal hardware platform for engineers with visual development ability. Engineers can use the embedded ITE camera for identification, detection and other applications. It is integrated into the compact mini smart camera with vision system to provide customers with more simple, practical and reliable Visual scheme. The extremely compact size and wide-angle optical features can provide the best scheme for carrying out close-up machine vision work. In a single compact vision scheme effectively and stably carry out inspection, color matching, code reading and OCR, so as to give full play to the advantages of the product. It is widely used in reading one-dimensional and two-dimensional codes and optical character recognition Classification, dynamic part positioning, inspection, product screening, assembly verification, etc.



Product Features

- Monochrome or color sensor, 0.3MP~2 MP can be chosen
- Open platform, supporting secondary development
- It supports master-slave mode and multi machine linkage control
- Compact size, ultra-low power consumption and small heat
- M12 lens with different focal length can be selected to meet different needs of customers
- Quad core arm 64 bit cortex-a53 architecture, fast response, stable and reliable performance
- Highly integrated, with built-in camera SDK, integrated light source and M12 lens, which can realize fast installation and use

Product Selection Table

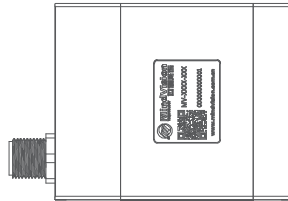
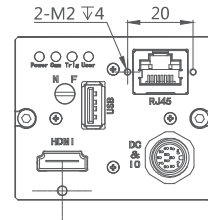
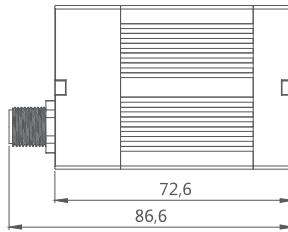
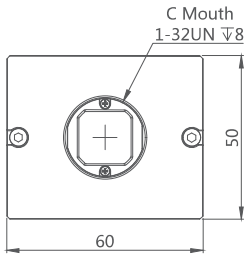
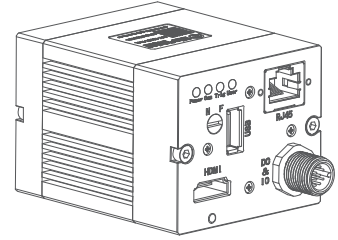
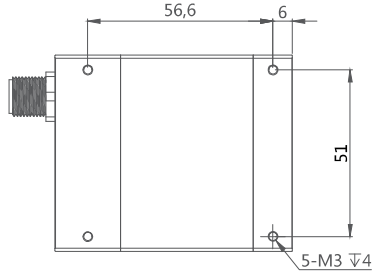
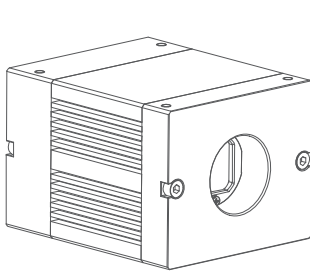
Model Number	Pixels	Sensor type	Shutter method	Maximum resolution	Pixel size	Frame rate (FPS)	Target size	Minimum exposure	Sensor model	Colour
MV-ITE31GC/M	0.36MP	CMOS	Global	752X480	6.0μm	108	1/3"	0.0652ms	MT9V024	Colour/Mono
MV-ITE130GM	1.22MP	CMOS	Global	1280X960	3.75μm	62	1/3"	0.0167ms	AR0135	Mono
MV-ITE131GC	1.22MP	CMOS	Global	1280X960	3.75μm	60	1/3"	0.014ms	AR0134	Colour
MV-ITE200GC/M	2MP	CMOS	Global	1600X1200	4.5μm	46	1/1.8"	0ms	EV76C570	Colour/Mono

Technical Parameters

Model	MV-ITE31GC/M	MV-ITE130GM	MV-ITE131GC	MV-ITE200GC/M
Parameter				
Sensor type	1/3" CMOS	1/3" CMOS	1/3" CMOS	1/1.8" CMOS
Colour/Mono	Colour/Mono	Colour/Mono	Colour/Mono	Colour/Mono
Effective Pixels	0.36MP	1.22MP	1.22MP	2MP
Pixel size	6.0μmX6.0μm	3.75μmX3.75μm	3.75μmX3.75μm	4.5μmX4.5μm
Shutter type	Global shutter			
Sensitivity	4.8V/lux-s 550nm	6.1V/lux-s 550nm	5.3 V/lux-s 550nm	7.4V/lux-s 3200K
Pixel bit depth	12bit	12bit	12bit	10bit
Maximum resolution	752X480	1280X960	1280X960	1600X1200
Frame rate	108fps	62fps	60fps	46fps
Maximum gain (multiple)	4	4	4	8
Exposure time range (ms)	0.0652~59	0.0167~32	0.014~26	0~109.67
CPU frequency	Quad core arm 64 bit cortex-a53 architecture main frequency 1.8g			
RAM	2G			
Disk	16G			
System	Ubuntu			
Video output format	Colour : Bayer8 Mono : Mono8			
Interface	External usb2.0x1 port, 100m network port x1, HDMI interface x1, and built-in light source (light source is optional)			
I/O port	1-channel optocoupler isolated external trigger input, 1-channel optocoupler isolated flash output, 1-channel optocoupler isolated input programmable IO, 3-channel optocoupler isolated output programmable IO			
Power supply	M12 aviation plug-in 12-24V			
Power	C mouth : 4W/M12 : 7W			
Lens interface	Port C/m12 (focal length optional)			Port C
Dimensions	60X50X72.6mm (Without lens and rear housing connector)			
Weight	<280g			
Operating temperature	0~50°C			
Working humidity	20~80% (No condensation)			
Storage temperature	-30~60°C			
Storage humidity	20~95% (No condensation)			
Other functions	Support any size ROI custom resolution, contrast and gamma adjustment, saturation adjustment, white balance correction, black level correction, custom dead center coordinate correctionISP image processing acceleration, 3D noise reduction, custom LUT table, frame rate adjustment, custom camera name, etc			

Note: the above models can be equipped with IP67. Please consult our sales engineer for more detailed parameters

ITE Series Dimension Drawing



Unit: mm